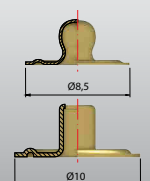
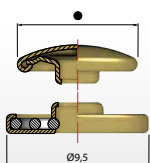




## BOTTONI A PRESSIONE

### CP0



#### TESTE

• 8,8

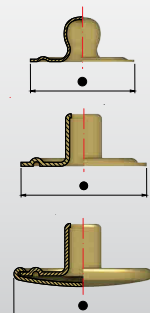
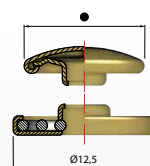
• 10,5

FEMMINA

MASCHIO

OLGO

### CPA



#### TESTE

• 12,5

M. 40 RAGGI • 10

OLGO • 12

• 14

ANCHE SCATTO FORTE

FEMMINA

MASCHIO • 10

OL. SVASATO • 12

• 14 MONETA

ANCHE SCATTO FORTE

FEMM. BOMBATA

MASCHIO BASE • 12,5

OL. BASE L. • 12,5

• 15,5

OL. CAL. • 12,5

OL. CAL. • 14

• 17

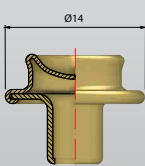
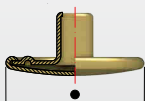
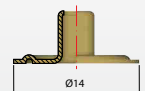
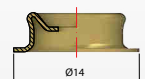
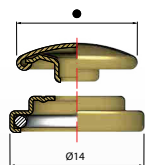
• 17 MONETA

• 20

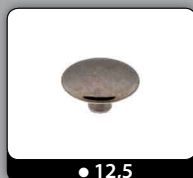


## BOTTONI A PRESSIONE

### CPK



#### TESTE



MASCHIO X CASCHI H.5

MASCHIO X CASCHI H.8

MASCHIO X CASCHI H.10

ANCHE SCATTO LEGGERO  
FEMMINA

MASCHIO

OLGO

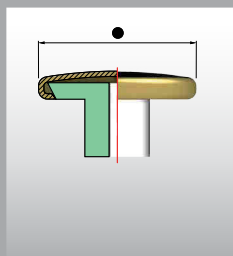
OLGO TD • 14

OLGO TD • 15,5

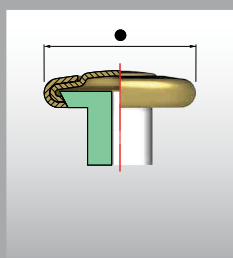


## BOTTONI JEANS

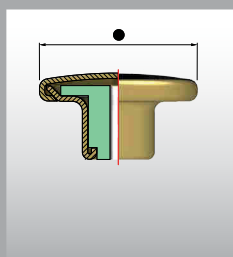
### TESTE CON GAMBO NYLON (BJ NY)



### TESTE CON GAMBO NYLON DOPPIA CALOTTA (BJ NY DC)



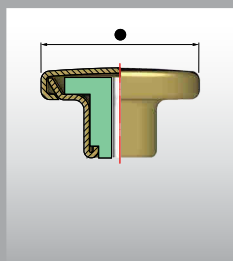
### BOTTONE JEANS RICOPERTO (BJ - R)



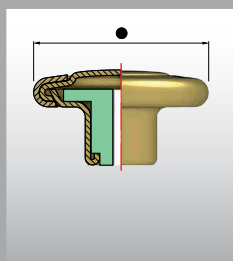


## BOTTONI JEANS

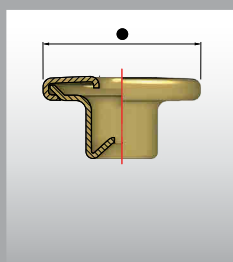
### BOTTONE JEANS RICOPERTO MONETA (BJ - R - MT)



### BOTTONE JEANS RICOPERTO DOPPIA CALOTTA (BJ - R - DC)



### BOTTONE JEANS FISSO FORATO 1 PUNTA ( BJ - FX - F - 1P)



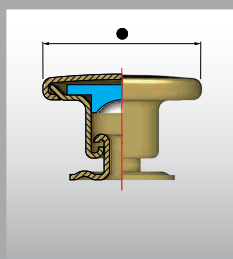
### BOTTONE JEANS MOBILE FORATO (BJ - MB - F)



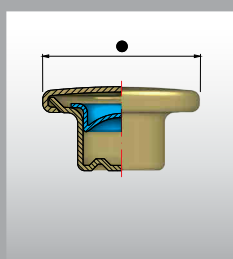


## BOTTONI JEANS

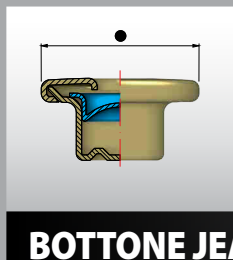
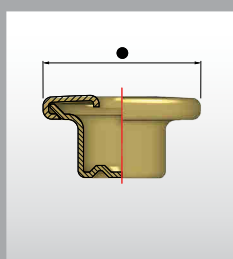
### BOTTONE JEANS MOBILE (BJ - MB)



### BOTTONE JEANS FISSO DOPPIA PUNTA (BJ - FX - DP)



### BOTTONE JEANS FORATO FISSO DOPPIA PUNTA (BJ - DP - F)



### BOTTONE JEANS FORATO DOPPIA PUNTA DODECAGONO (BJ - DP - F - RIB - DODEC.)





## ESEMPI DI MARCATURE JEANS

### TESTA BJ 14 BOMBATA



### TESTA BJ 14 PIANA E CONCAVA



### TESTA BJ 14 FOR. CONCAVA E FOR PIANA



### TESTA BJ 17 BOMBATA E PIANA



### TESTA BJ 20 BOMBATA E PIANA



### LINEA SFERA "DOTS" BJ 14/17/20



## ESEMPI DI MARCATURE JEANS

### TESTA BJ 17 FORATA PIANA E FORATA BOMBATA



### TESTA BJ 17 FORATA CONCAVA



### TESTA BJ 20 FORATA CONCAVA



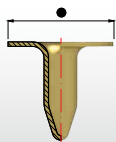
### TESTA BJ 22 FOR. CONCAVA E TESTA BJ 23 FOR. CONCAVA





## CHIODI

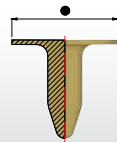
### LISCI



● 9,5 - H. 8

● 9,5 - H. 7

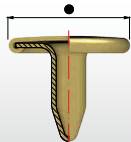
- PER RIVETTI E BOTTONI JEANS UNA PUNTA



● 9 - H. 8  
ALLUMINIO

● 9 - H. 8  
RAME

### CALOTTATI



CAL. ● 9 - H. 6

CAL. ● 9 - H. 7

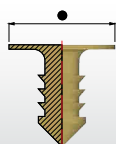
CAL. ● 9 - H. 8

CAL. ● 10,5 - H. 8

CAL. ● 12 - H. 8

- PER RIVETTI E BOTTONI JEANS UNA PUNTA  
- CALOTTA PERSONALIZZABILE

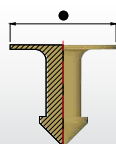
### FILETTATI E FRECCIA



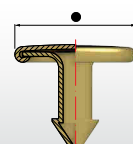
ALL. FILETTATO  
● 9 - H. 8

RAME FILETTATO  
● 9 - H. 8

- PER BOTTONI GAMBO NYLON



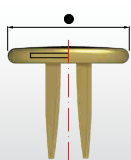
ALL. FRECCIA  
● 9 - H. 8



FRECCIA CAL.  
● 9 - H. 8

- CALOTTA PERSONALIZZABILE

### PER 2 PUNTE



CHIDO CAL. ● 9  
X 2 PUNTE H. 8

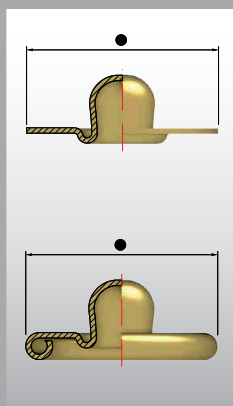
CHIDO CAL. ● 9  
X 2 PUNTE H. 10

- PER BOTTONI DUE PUNTE  
- CALOTTA PERSONALIZZABILE



## RIVETTI JEANS

### RIVETTI FERMATASCHE RJ



RJ • 6,2



RJ • 7



RJ • 8



RJ • 8,5



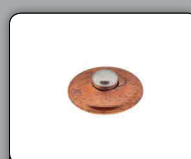
RJ • 9,5



RJ • 9,5 BOR. ROV.



RJ • 9,5 ROVESCIO



RJ • 9,5 CAL.

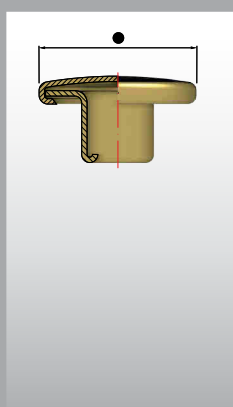


RJ • 12

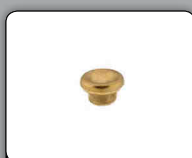


RJ • 14

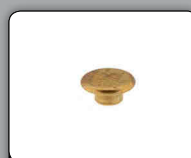
### RIVETTI FERMATASCHE BCH



BCH • 5,6 BOMB.



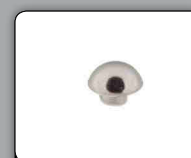
BCH • 5,6 CONC.



BCH • 7 PIANA



BCH • 7 BOMB.



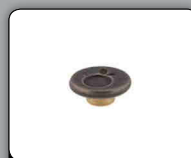
BCH • 7 SFERA



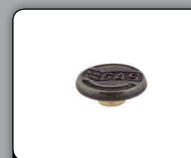
BCH • 7 SF. DOTS



BCH • 7 BUGNA 2



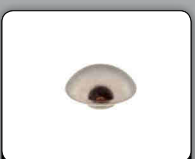
BCH • 8 PIANA



BCH • 9 PIANA



BCH • 9 BOMB.



BCH • 9 SFERA



BCH • 9 SF. DOTS



BCH • 9,2 BOMB.



BCH • 9,2 F. CONC.



BCH • 9,2 PIANA



BCH • 9,5 BOMB.



BCH • 9,5 BOMB. M.



BCH • 9,5 PIANA



BCH • 9,5 CONC.



BCH • 9,5 CON. RB. ES.



BCH • 9,5 TP. BUGNA



BCH • 9,5 FOR. TP.



BCH • 9,5 FOR. CONC.



BCH • 9,5 BUGNA 5



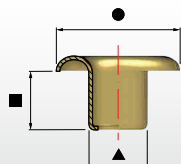
BCH • 12



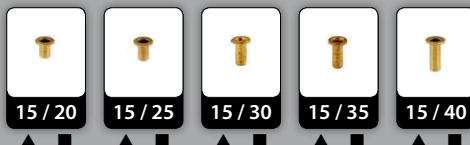
BCH • 12,5



## MICROCCHIELLI UNIFICATI



### OU 15



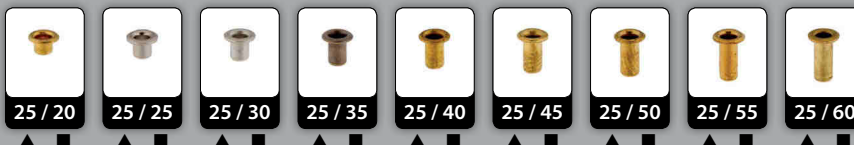
● = 2,5 ■ → fino a 15/100

### OU 20



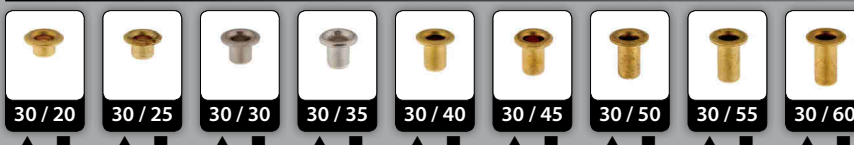
● = 3,5 ■ → fino a 20/120

### OU 25



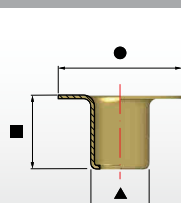
● = 4 ■ → fino a 25/120

### OU 30



● = 5 ■ → fino a 30/120

## SIGILLI



● 7  
■ 4  
▲ 2,9



● 7  
■ 4  
▲ 2,9



● 9  
■ 4,7  
▲ 3,4



● 9  
■ 4,7  
▲ 3,4

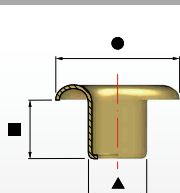




## OCCHIELLI

### LINEA 058

### VARI



● 6  
■ 4,3  
▲ 3,6



● 10  
■ 4,5  
▲ 3,8



● 6,5  
■ 2,5  
▲ 3,7

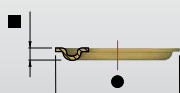


● 8,5x13,5  
■ 4,5  
▲ 3,5x8,5



VARIAZIONE H. GAMBO

■ 3,8 OC. 058 1/4



### RANELLE

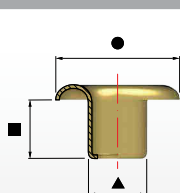
● 7,5  
■ 0,6



● 7,5x12,5  
■ 0,5



### LINEA 054



● 7,5  
■ 3,8  
▲ 4,5



● 8  
■ 3,8  
▲ 4,5



● 9,5  
■ 3,8  
▲ 4,5

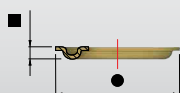


● 9,5  
■ 3,8  
▲ 4,5



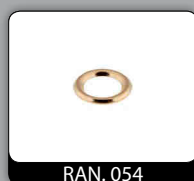
VARIAZIONE H. GAMBO

■ 3,4 OC. 054 1/4 ■ 4,4 OC. 054 1/2 ■ 5 OC. 054 3/4 ■ 5,3 OC. 054 4/5 ■ 6 OC. 054 7/8



### RANELLE

● 7,5  
■ 0,7



● 8  
■ 1,7



● 8  
■ 1



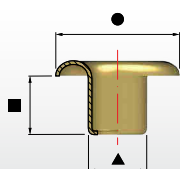
● 8  
■ 1,9  
▲ 5,2





## OCCHIELLI

### LINEA 051



●9,5 ■4,5 ▲5,5	 OC. 051	●9,5 ■5,2 ▲5,5	 OC. 051 1/2 ZIGR.	●9,5 ■5,2 ▲5,5	 OC. 051 1/2 ESAG. 9.5	●10 ■5,2 ▲5,5	 OC. 051 1/2 ESAG. 10
●10 ■4,5 ▲5,5	 OC. 051 TPC 10	●10 ■4,5 ▲5,5	 OC. 051 TPC 10 M	●10,5 ■5,2 ▲5,5	 OC. 051 1/2 TPC 10,5 M	●11 ■5,2 ▲5,5	 OC. 051 1/2 TPC 11 M
●11 ■5,2 ▲5,5	 OC. 051 1/2 ESAG. 11	●11 ■5,2 ▲5,5	 OC. 051 1/2 TPA 11 Z+C	●11 ■3,5 ▲5,5	 OC. 051 CONOT. 11	●11 ■4,2 ▲5,5	 OC. 051 TPC Q. 11
●11,5 ■4,2 ▲5,5	 OC. 051 TPC 11,5	●11,5 ■5,2 ▲5,5	 OC. 051 1/2 TPC 11,5 M	●11,5 ■5,2 ▲5,5	 OC. 051 1/2 TRC 11,5 PUNT.	●11,5 ■5,2 ▲5,5	 OC. 051 1/2 11,5 8 FORI
●12 ■4,2 ▲5,5	 OC. 051 TPC 12 M	●12 ■4,2 ▲5,5	 OC. 051 TPC 12 CUORI	●12 ■4,2 ▲5,5	 OC. 051 TPC 12 FIORE INCISO	●12 ■4,2 ▲5,5	 OC. 051 TPC 12 FIORE RILIEVO
●12 ■4,2 ▲5,5	 OC. 051 TPC 12 STELLA INCISA	●12 ■4,2 ▲5,5	 OC. 051 TPC 12 2B 2C	●12 ■4,2 ▲5,5	 OC. 051 TPC 12 LETTERE	●12 ■6,2 ▲5,5	 OC. 051 3/4 TPA 12 ESAG.
●12,5 ■6,2 ▲5,5	 OC. 051 3/4 TPC 12,5	●12,5 ■6,2 ▲5,5	 OC. 051 3/4 TPC 12,5 M	●13,5 ■5 ▲5,5	 OC. 051 1/2 TBC 13,5		

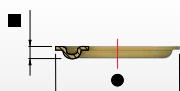
#### VARIAZIONE H. GAMBO

■6,2 OC. 051 3/4 ■7 OC. 051 7/8 ■9 OC. 051 4/5 ■2,5 OC. 051 TPC 12 PER APPL. DOUBLE FACE



## OCCHIELLI

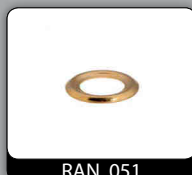
### LINEA 051



#### RANELLE

● 9,5

■ 0,7



RAN. 051

● 10

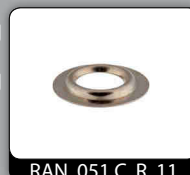
■ 1,5



RAN. 051 AUT.

● 11

■ 1,3



RAN. 051 C. R. 11

● 12,2

■ 1,3



RAN. 051 C. R. 12,2

● 10

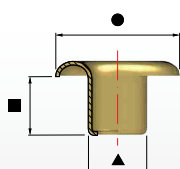
■ 1,75

▲ 6,2



CONTRO OC. 051

### LINEA 052



● 8,8

■ 4,2

▲ 5



OC. 052

#### VARIAZIONE H. GAMBO

■ 3,8

OC. 052 1/4

■ 4,7

OC. 052 1/2

■ 5,2

OC. 052 3/4

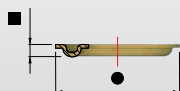
#### RANELLE

● 9,5

■ 0,7



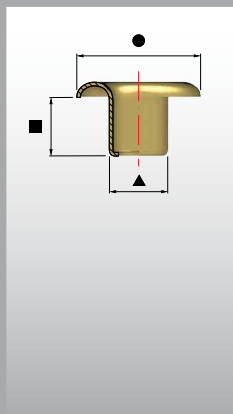
RAN. 051/052





## OCCHIELLI

### LINEA 050



● 11,5

■ 5

▲ 6,7



● 11,5

■ 5

▲ 6,7



● 11,5

■ 4

6,7



● 12,5

■ 5,7

6,7



● 12,5

■ 4

▲ 6,7



● 12,5

■ 4

▲ 6,7



● 12,5

■ 4

▲ 6,7



● 13

■ 4,5

▲ 7



#### VARIAZIONE H. GAMBO

■ 6,6

OC. 050 3/4

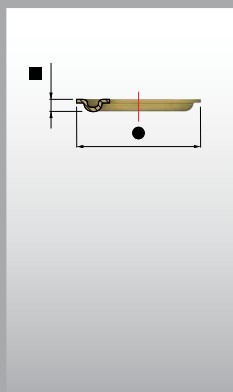
■ 7

OC. 050 3/4 TP

■ 8,1

OC. 050 4/5

### RANELLE



● 12

■ 0,8



● 12

■ 1,6



● 12,5

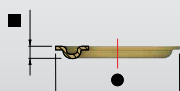
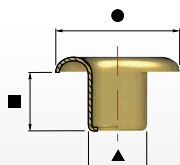
■ 1,5





## OCCHIELLI VELA+RAN

### LINEA VELA 21



● 128

■ 6,5

▲ 7,2



● 128

■ 6

▲ 7,2



● 128

■ 6,3

▲ 7,2



● 14

■ 6,3

▲ 7,2



VARIAZIONE H. GAMBO

■ 3,9

OC. VE 21 1/5

■ 5,1

OC. VE 21 1/4

### RANELLE

● 125

■ 0,7

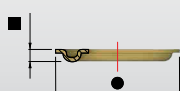
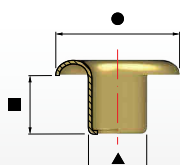


● 125

■ 1,8



### LINEA VELA 31



● 147

■ 6,2

▲ 8,5



● 15

■ 6,2

▲ 8,5



● 15

■ 6,2

▲ 8,5



● 15

■ 4,7

▲ 8,5



VARIAZIONE H. GAMBO

■ 4,7

OC. VE 31 1/4

■ 2,6

OC. VE 31 TPC H2 PER DOUBLE FACE

### RANELLE

● 147

■ 0,8



● 15

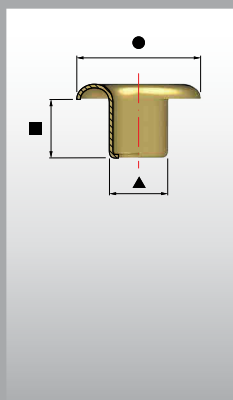
■ 2





## OCCHIELLI VELA+RAN

### LINEA VELA 40



● 18,7

■ 5

▲ 9,8



● 18

■ 5,2

▲ 10



● 18

■ 5,2

▲ 10



● 20

■ 5,2

▲ 10



● 20

■ 5,2

▲ 10



● 20

■ 4,3

▲ 10



● 20,5

■ 5

▲ 10



#### VARIAZIONE H. GAMBO

■ 2

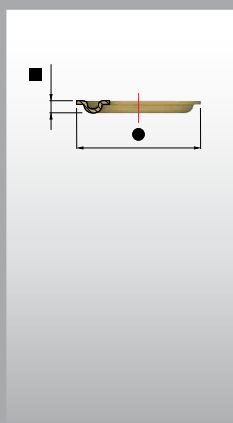
OC VE 40 TPC H2 PER APPLICAZIONE DOUBLE FACE

■ 3,7

OC. VE 40 1/4

■ 6,9

OC. VE 40 1/2



### RANELLE

● 18

■ 1



● 18

■ 2



● 18

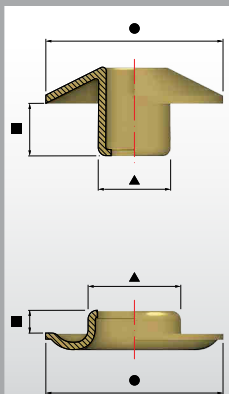
■ 1,5





## OCCHIELLI VELA+RAN

### LINEA VELA 45



●20

■5,3

▲11



OC. VE 45 CONO T. 20

●22

■4,3

▲11



OC. VE 45 CONO T. 22

### RANELLE

●225

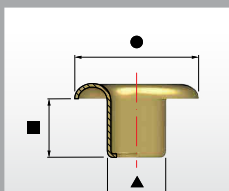
■4,4

▲12



PER RAN OC. VE 50 1/3

### LINEA VELA 50



●22

■7,3

▲12



OC. VE 50 T. 22

●22,5

■7,3

▲12



OC. VE 50

●225

■5

▲125



OC. VE 50 1/4 TPC

●225

■7,3

▲125



OC. VE 50 TPC M.

●225

■6,1

▲12



OC. VE 50 TB

### VARIAZIONE H. GAMBO

■2

OC. VE 50 TPC. VE PER APPL. DOUBLE FACE

■4,2

OC. VE 50 1/4 TB

■5,5

OC. VE 50 1/3

### RANELLE

●22

■1,5



RAN. VE 50

●22

■2,2

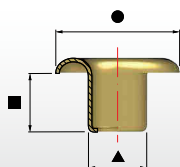


RAN. VE 50 AUT.



## OCCHIELLI VELA+RAN

### LINEA VELA 60



● 23,5

■ 6,8

▲ 14



OC. VE 60

● 25,5

■ 6

▲ 14



OC. VE 60 TPC

● 25,5

■ 6

▲ 14



OC. VE 60 TPC M.

● 25,5

■ 6

▲ 14



OC. VE 60 TPC DOTS

● 25,5

■ 4,9

▲ 14



OC. VE 60 TB

● 25 X 33

■ 4

▲ 14



OC. VE 60 OVALE

● 25 X 29

■ 4

▲ 14



OC. VE 60 OVALE SM

#### VARIAZIONE H. GAMBO

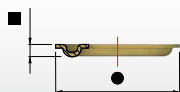
■ 2

VELA 60 TPC PER APPL. DOUBLE FACE

■ 3,5

OC. VE 60 1/4

### RANELLE



● 23,5

■ 1,2

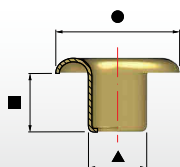


RAN. VE 60



## OCCHIELLI VELA

### LINEA VELA 70



● 30  
■ 7,8  
▲ 16



● 285  
■ 5,8  
▲ 165



● 285  
■ 2,8  
▲ 165



● 285  
■ 5,1  
▲ 165



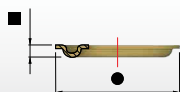
#### VARIAZIONE H. GAMBO

3

OC. VE 70 TPC PER APPL. DOUBLE FACE

8

OC. VE 70 1/2 TPC



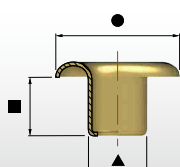
● 30  
■ 1,4



● 30  
■ 2,3



### LINEA VELA 220



● 30  
■ 3,7  
▲ 22



● 31  
■ 3,7  
▲ 22



● 32  
■ 3,7  
▲ 22



#### ALTRI ARTICOLI PER CARTOTECNICA

● 10  
■ 6  
▲ 3,2



● 7,5  
■ 6,4  
▲ 3



● 6  
■ 6,6  
▲ 3,8



● 8,7  
■ 9  
▲ 3,5



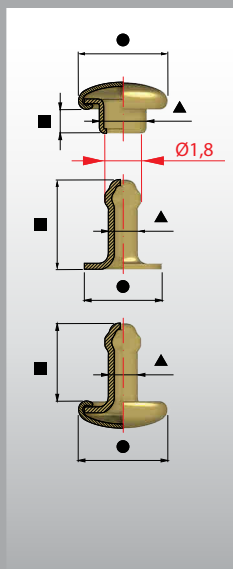
● 7  
■ 6  
▲ 3,8





## RIVETTI TUBOLARI

### LINEA 4007



#### TESTE

● 4  
■ 2,5  
▲ 2,5



● 5,6  
■ 2,5  
▲ 2,5



● 4  
■ 2,5  
▲ 2,5



#### OLGHI - OLGHI/D

● 4,5  
■ 5  
▲ 1,7



● 4,5  
■ 7  
▲ 1,7



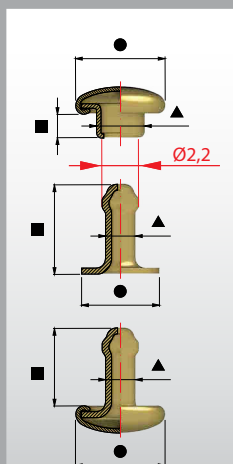
● 4  
■ 4,5  
▲ 1,7



● 4  
■ 6,5  
▲ 1,7



### LINEA 000



#### TESTE

● 4,8  
■ 2,3  
▲ 2,8



● 4,8  
■ 2  
▲ 2,8



● 4,8  
■ 2,3  
▲ 2,8



● 7  
■ 2,3  
▲ 2,8



● 7  
■ 2,3  
▲ 2,8



#### OLGHI - OLGHI/D

● 4,8  
■ 5  
▲ 2,1



● 4,8  
■ 6,7  
▲ 2,1



● 4,8  
■ 4,5  
▲ 2,1



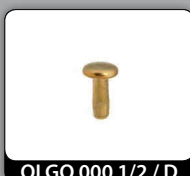
● 4,8  
■ 4,5  
▲ 2,1



● 4,8  
■ 4,5  
▲ 2,1



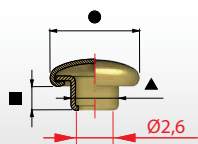
● 4,8  
■ 6,2  
▲ 2,1





## RIVETTI TUBOLARI

### LINEA 00



#### TESTE

● 5,6  
■ 2,8  
▲ 3,2



TESTA 00

● 5,6  
■ 2,8  
▲ 3,2



TESTA 00 DOTS

● 5,6  
■ 2,8  
▲ 3,2



TESTA 00 SF.

● 5,6  
■ 2,8  
▲ 3,2



TESTA 00 SF. DOTS

● 5,6  
■ 2,8  
▲ 3,2



TESTA 00 TP

● 7  
■ 2,8  
▲ 3,2



TESTA 00 T.7

● 7  
■ 2,8  
▲ 3,2

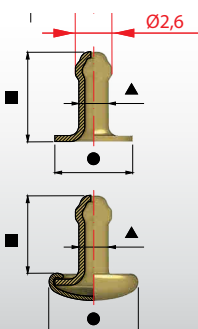


TESTA 00 T.7 TP

● 5,6  
■ 3  
▲ 3,2



TESTA 00 PUNTA C.



#### OLGHI

● 6,5  
■ 6,7  
▲ 2,5



OLGO 00

● 10  
■ 6,7  
▲ 2,5



OLGO 00 T10

● 6,5  
■ 7,5  
▲ 2,5



OLGO 00 1/2

● 6,5  
■ 10  
▲ 2,6



OLGO 00 7/9

#### OLGHI/D

● 5,6  
■ 6  
▲ 2,5



OLGO 00 / D

● 11  
■ 6  
▲ 2,5



OLGO 00 / D 11

● 5,6  
■ 6  
▲ 2,5



OLGO 00 / D TP

● 5,6  
■ 6  
▲ 2,5



OLGO 00 / D TC

● 5,6  
■ 6,7  
▲ 2,5



OLGO 00 1/2 / D

● 7  
■ 6,7  
▲ 2,5



OLGO 00 1/2 / D T.7

● 5,6  
■ 6,7  
▲ 2,5



OLGO 00 1/2 / D TC

● 5,6  
■ 9,3  
▲ 2,6



OLGO 00 7/9 / D C

● 7  
■ 9,3  
▲ 2,5

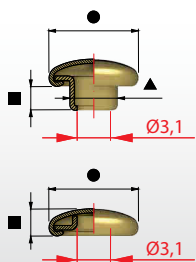


OLGO 00 7/9 / D T.7
























## RIVETTI TUBOLARI

### LINEA 33



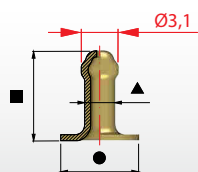
#### TESTE

● 7 ■ 3 ▲ 3,8	 <b>TESTA 33</b>	● 7 ■ 3 ▲ 3,8	 <b>TESTA 33 MARC.</b>	● 7 ■ 3 ▲ 3,8	 <b>TESTA 33 DOTS</b>	● 7 ■ 3 ▲ 3,8	 <b>TESTA 33 LINE 980</b>
● 7 ■ 3 ▲ 3,8	 <b>TESTA 33 SF.</b>	● 7 ■ 3 ▲ 3,8	 <b>TESTA 33 SF. DOTS</b>	● 7 ■ 3 ▲ 3,8	 <b>TESTA 33 SF. LINE 980</b>	● 7 ■ 3 ▲ 3,8	 <b>TESTA 33 TP</b>
● 7 ■ 1,5 ▲ 3,8	 <b>TESTA 33 T.7 TB</b>	● 7 ■ 3 ▲ 3,5	 <b>TESTA 33 DIAM.</b>	● 7 ■ 3 ▲ 3,6	 <b>TESTA 33 P.C.</b>	● 7 ■ 3 ▲ 3,5	 <b>TESATA 33 PIRAM.</b>
● 8 ■ 3 ▲ 3,8	 <b>TESTA 33 T. 8</b>	● 8 ■ 5,5 ▲	 <b>TESTA 33 T. 8 P.C. 70°</b>	● 8,5 ■ 3 ▲ 3,8	 <b>TESTA 33 T 8,5</b>	● 8 ■ 4 ▲	 <b>TESTA 33 T. CONO</b>
● 9 ■ 2,5 ▲ 3,9	 <b>TESTA 33 TB</b>	● 7 ■ 3,5 ▲ 3,5	 <b>TESTA 33 QUADR.</b>	● 12 ■ 3,3 ▲ 3,8	 <b>TESTA 33 BC SFERA</b>	● 12 ■ 3,3 ▲ 3,8	 <b>TESTA 33 BC TC</b>
● 12 ■ 3,3 ▲ 3,8	 <b>TESTA 33 BC PC</b>						



## RIVETTI TUBOLARI

### LINEA 33



#### OLGHI

● 7,5  
■ 6  
▲ 2,9



● 7,5  
■ 7  
▲ 2,9



● 9,5  
■ 7  
▲ 2,9



● 7,5  
■ 8  
▲ 2,9



● 8  
■ 8  
▲ 2,9



● 9  
■ 8  
▲ 2,9



● 9,5  
■ 8  
▲ 2,9



● 7,5  
■ 9  
▲ 2,9



● 8  
■ 9  
▲ 2,9



● 7,5  
■ 10  
▲ 2,9



● 8  
■ 10  
▲ 2,9



● 10  
■ 10  
▲ 2,9



● 7,5  
■ 11,5  
▲ 2,9



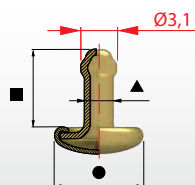
● 8  
■ 13  
▲ 2,9





## RIVETTI TUBOLARI

### LINEA 33



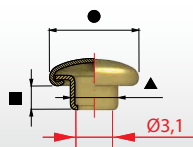
#### OLGHI / D

● 7 ■ 6,2 ▲ 2,9		● 7 ■ 7,2 ▲ 2,9		● 11 ■ 7,2 ▲ 2,9		● 7 ■ 7,2 ▲ 2,9	
● 7 ■ 7,2 ▲ 2,9		● 7 ■ 5,5 ▲ 2,9		● 9 ■ 7,2 ▲ 2,9		● 7 ■ 8,2 ▲ 2,9	
● 7 ■ 8,2 ▲ 2,9		● 7 ■ 9,2 ▲ 2,9		● 7 ■ 9,2 ▲ 2,9		● 7 ■ 9,2 ▲ 2,9	
● 7 ■ 7,5 ▲ 2,9		● 7 ■ 7, ▲ 2,9		● 7 ■ 10,5 ▲ 2,9		● 7 ■ 10,5 ▲ 2,9	
● 7 ■ 10,8 ▲ 2,9		● 7 ■ 9 ▲ 2,9		● 7 ■ 9,5 ▲ 2,9			



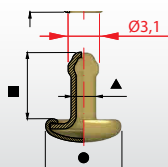
## RIVETTI TUBOLARI

### LINEA 34



#### TESTE

● 9,2 ■ 3,2 ▲ 3,7	 TESTA 34	● 9,2 ■ 3,2 ▲ 3,7	 TESTA 34 MACCH.	● 9,2 ■ 3,2 ▲ 3,7	 TESTA 34 DOTS	● 9,2 ■ 3,2 ▲ 3,7	 TESTA 34 TP
● 8,8 ■ 3,5 ▲ 3,9	 TESTA 34 DIAM.	● 9,2 ■ 3 ▲ 3,7	 TESTA 34 ESAG.	● 9,2 ■ 2,5 ▲ 3,7	 TESTA 34 ESAG. TB	● 9 ■ 3 ▲ 3,8	 TESTA D.9 SF.
● 9 ■ 3 ▲ 3,8	 TESTA D.9 SF. DOTS	● 9 ■ 3,2 ▲ 3,9	 TESTA 34 P. CONO	● 9 ■ 3,5 ▲ 4	 TESTA 34 PIRAMIDE	● 9,2 ■ 3,5 ▲ 3,9	 TESTA 34 INCAVO



#### OLGHI / D

● 9,2 ■ 7,2 ▲ 2,9	 OLGO 34 1/4 / D	● 9,2 ■ 8,2 ▲ 2,9	 OLGO 34 / D	● 9,2 ■ 8,2 ▲ 2,9	 OLGO 34 / D TP	● 9,2 ■ 9,2 ▲ 2,9	 OLGO 34 1/2 / D
● 9,2 ■ 9,2 ▲ 2,9	 OLGO 34 1/2 / D TP	● 9,2 ■ 10,5 ▲ 2,9	 OLGO 34 8/9 / D	● 9,2 ■ 12 ▲ 2,9	 OLGO 34 H. 13 / D	● 9 ■ 8 ▲ 2,9	 OLGO 34/D SFERA

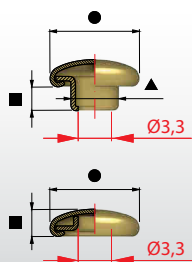
N.B.

Ogni Testa 34 può essere applicata con Olgo della linea 33



## RIVETTI TUBOLARI

### LINEA 36



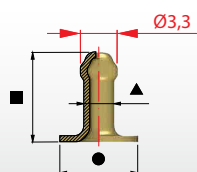
#### TESTE

● 11 ■ 3 ▲ 3,8	 TESTA 36	● 11 ■ 3 ▲ 3,8	 TESTA 36 MARC.	● 11 ■ 3 ▲ 3,8	 TESTA 36 DOTS	● 11 ■ 3 ▲ 3,8	 TESTA 36 SF.
● 11 ■ 3 ▲ 3,8	 TESTA 36 SF. DOTS	● 11 ■ 3 ▲ 3,8	 TESTA 36 SF. LINE	● 11 ■ 3 ▲ 3,8	 TESTA 36 SF. WALL	● 11 ■ 4,8 ▲	 TESTA 36 SF. R.6
● 11 ■ 3 ▲ 3,8	 TESTA 36 TP	● 11 ■ 1 ▲ 4	 TESTA 36 TB	● 11 ■ 1 ▲ 4	 TESTA 36 TB MARC.	● 11 ■ 3 ▲ 4	 TESTA 36 DIAM.
● 11,3 ■ 2,5 ▲ 3,8	 TESTA 36 ESAG.	● 11 ■ 3 ▲ 3,9	 TESTA 36 P. CONO	● 11 ■ 5 ▲	 TESTA 36 P. C. 100°	● 11 ■ 5,5 ▲	 TESTA 36 T. CONO
● 11 ■ 3 ▲ 3,9	 TESTA 36 PIRAM.	● 9,2 ■ 3 ▲ 3,8	 TESTA 36 T. 9,2 MARC.	● 11 ■ 5,5 ▲ 3,8	 TESTA 36 1/2	● 14 ■ 2,5 ▲ 3,9	 TESTA 37 SF.
● 14 ■ 6,5 ▲	 TESTA 37 T. CONO	● 12,5 ■ 3 ▲ 4	 TESTA 37 PIRAM.	● 15,5 ■ 6 ▲ 4	 TESTA 36 1/2 T. 15,5	● 13 ■ 25 ▲ 4	 TESTA 36 T. 13 P.C.100°
● 17 ■ 7,7 ▲	 TESTA D.17 SFERA R.9	● 20 ■ 8,7 ▲	 TESTA D.20 SFERA R.11	● 11 ■ 3 ▲ 3,8	 TESTA 36 INCAVO	● 14 ■ 4 ▲ 3,8	 TESTA 36 T 14
● 17 ■ 4 ▲ 3,8	 TESTA 36 T 17						



## RIVETTI TUBOLARI

### LINEA 36



#### OLGHI

● 10  
■ 8  
▲ 3,2



OLGO 36 H. 8

● 10  
■ 9  
▲ 3,2



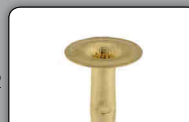
OLGO 36 H. 9

● 10  
■ 10  
▲ 3,2



OLGO 36 H. 10

● 10  
■ 11,2  
▲ 3,3



OLGO 36

● 10  
■ 13  
▲ 3,3



OLGO 36 3/4

● 12  
■ 13  
▲ 3,3



OLGO 36 3/4 T 12

● 14,3  
■ 13  
▲ 3,3



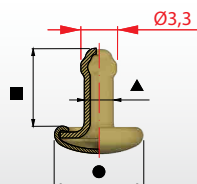
OLGO 36 3/4 T 14,3

● 10  
■ 15,5  
▲ 3,3



OLGO 36 4/5

### LINEA 36



#### OLGHI / D

● 11  
■ 7  
▲ 3,2



OLGO 36 8 / D

● 11  
■ 7  
▲ 3,2



OLGO 36 8 / D TP

● 11  
■ 8  
▲ 3,2



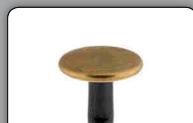
OLGO 36 9 / D

● 11  
■ 8  
▲ 3,2



OLGO 36 9 / D TP

● 11  
■ 9  
▲ 3,2



OLGO 36 10 / D TP

● 11  
■ 10,2  
▲ 3,2



OLGO 36 / D

● 11  
■ 10,2  
▲ 3,2



OLGO 36 / D TP

● 11  
■ 9,5  
▲ 3,2



OLGO 36 TB

● 11  
■ 9,5  
▲ 3,2



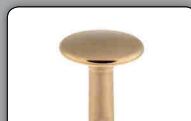
OLGO 36 TB M.

● 9,2  
■ 12  
▲ 3,2



OLGO 36 3/4 / D 9,2

● 11  
■ 12  
▲ 3,2



OLGO 36 3/4 D

● 11  
■ 12  
▲ 3,2



OLGO 36 3/4 / D TP

● 11  
■ 14,5  
▲ 3,2



OLGO 36 4/5 / D

● 9,2  
■ 14,2  
▲ 3,2



OLGO 36 4/5 / D 9,2

● 9,2  
■ 8  
▲ 3,2

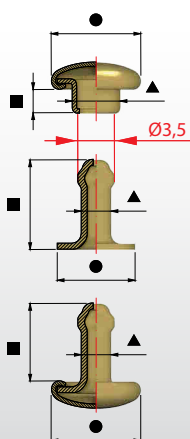


OLGO 36 9 / D 9,2



## RIVETTI TUBOLARI

### LINEA 37



#### TESTE

● 13  
■ 4  
▲ 4,1



● 13  
■ 4  
▲ 4,1



● 13  
■ 5,7  
▲ 4,1



#### OLGHI

● 11,6  
■ 9,5  
▲ 3,3



● 11,6  
■ 11,6  
▲ 3,3



● 11,6  
■ 14  
▲ 3,3



#### OLGHI / D

● 13  
■ 8,5  
▲ 3,3



● 13  
■ 10,8  
▲ 3,3



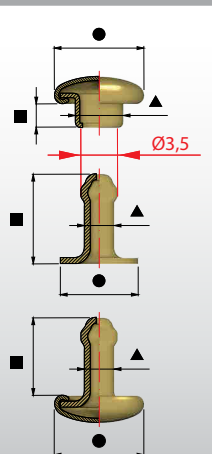
● 13  
■ 13,2  
▲ 3,3





## RIVETTI TUBOLARI

### LINEA 42



#### TESTE

● 11  
■ 3,5  
▲ 4,3



● 9,2  
■ 3,5  
▲ 4,3



#### OLGHI - OLGHI/D

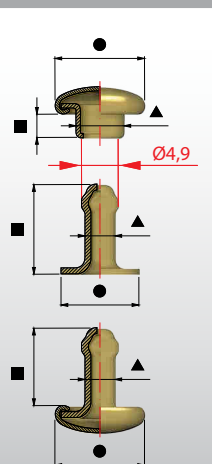
● 10  
■ 15  
▲ 3,4



● 11  
■ 14,2  
▲ 3,4



### LINEA 41



#### TESTE

● 13  
■ 9  
▲ 5,6



● 13  
■ 9  
▲ 5,6



#### OLGHI - OLGHI/D

● 12  
■ 18  
▲ 4,7



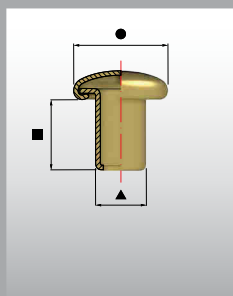
● 13  
■ 17,2  
▲ 4,7





## RIVETTI AUTOFORANTI

### LINEA 333 T. 6



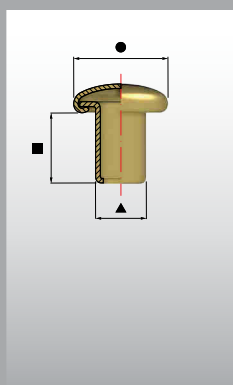
● 6  
■ 8  
▲ 3,8



● 6  
■ 11  
▲ 3,8



### LINEA 333 T. 7



● 7  
■ 4  
▲ 3,8



● 7  
■ 5  
▲ 3,8



● 7  
■ 6  
▲ 3,8



● 7  
■ 7  
▲ 3,8



● 7  
■ 7,7  
▲ 3,8



● 7  
■ 8,5  
▲ 3,8



● 7  
■ 9,3  
▲ 3,8



● 7  
■ 10  
▲ 3,8



● 7  
■ 3  
▲ 3,8



● 7  
■ 11,5  
▲ 3,8



● 7  
■ 12,5  
▲ 3,8



● 7  
■ 14  
▲ 3,8



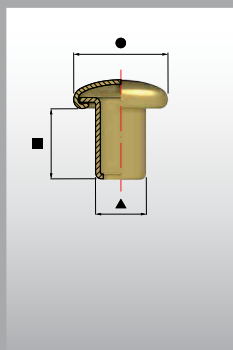
### VARIAZIONI MODELLI DI TESTA Ø 7





## RIVETTI AUTOFORANTI

### LINEA 333 T. 8



● 8  
■ 5  
▲ 3,8



● 8  
■ 6  
▲ 3,8



● 8  
■ 7  
▲ 3,8



● 8  
■ 8  
▲ 3,8



● 8  
■ 4,4  
▲ 3,8



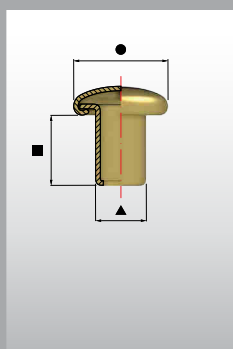
● 8  
■ 10  
▲ 3,8



● 8  
■ 11,5  
▲ 3,8



### LINEA 333 T. 9



● 9  
■ 4  
▲ 3,8



● 9  
■ 5  
▲ 3,8



● 9  
■ 6  
▲ 3,8



● 9  
■ 7  
▲ 3,8



● 9  
■ 8  
▲ 3,8



● 9  
■ 10  
▲ 3,8



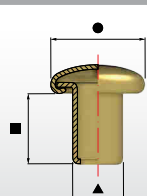
### VARIAZIONI MODELLI DI TESTA Ø 9





## RIVETTI AUTOFORANTI

### LINEA 336



● 11  
■ 6,7  
▲ 3,8



● 11  
■ 7,7  
▲ 3,8



● 11  
■ 10  
▲ 3,8



● 11  
■ 11  
▲ 3,8



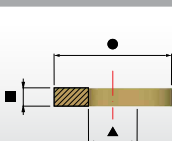
● 11  
■ 13  
▲ 3,8



### VARIAZIONI MODELLI DI TESTA Ø 11



### RANELLE PER AUTOFORANTI 333 - 336



● 12  
■ 1,8



● 9  
■ 0,7



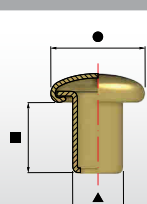
● 10  
■ 0,9



● 12  
■ 0,9



### LINEA 335



● 10,5  
■ 9  
▲ 4,3



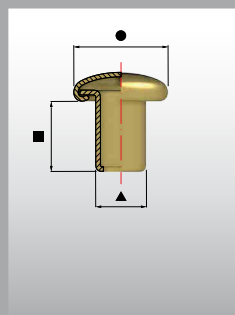
● 10,5  
■ 11  
▲ 4,3





## RIVETTI AUTOFORANTI

### LINEA 60 /



● 9  
■ 9,2  
▲ 6



● 9,2  
■ 11  
▲ 6



● 10,5  
■ 9  
▲ 6



● 13  
■ 9  
▲ 6



● 13  
■ 11  
▲ 6



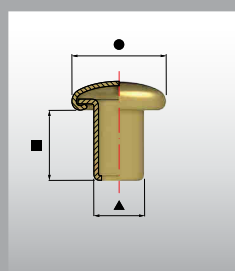
● 13  
■ 13,5  
▲ 6



● 15,5  
■ 14  
▲ 6



## MICRORIVETTI



15



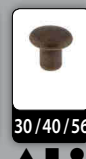
20



25



30



### MICRORIVETTI PIENI SEMIFORATI (TECNICA CONIATURA DA FILO)

RIVETTI ESEGUIBILI  
CON FORME E Ø GAMBO  
A RICHIESTA



### RIV. STRASS



### RIV. CABOUCHON

